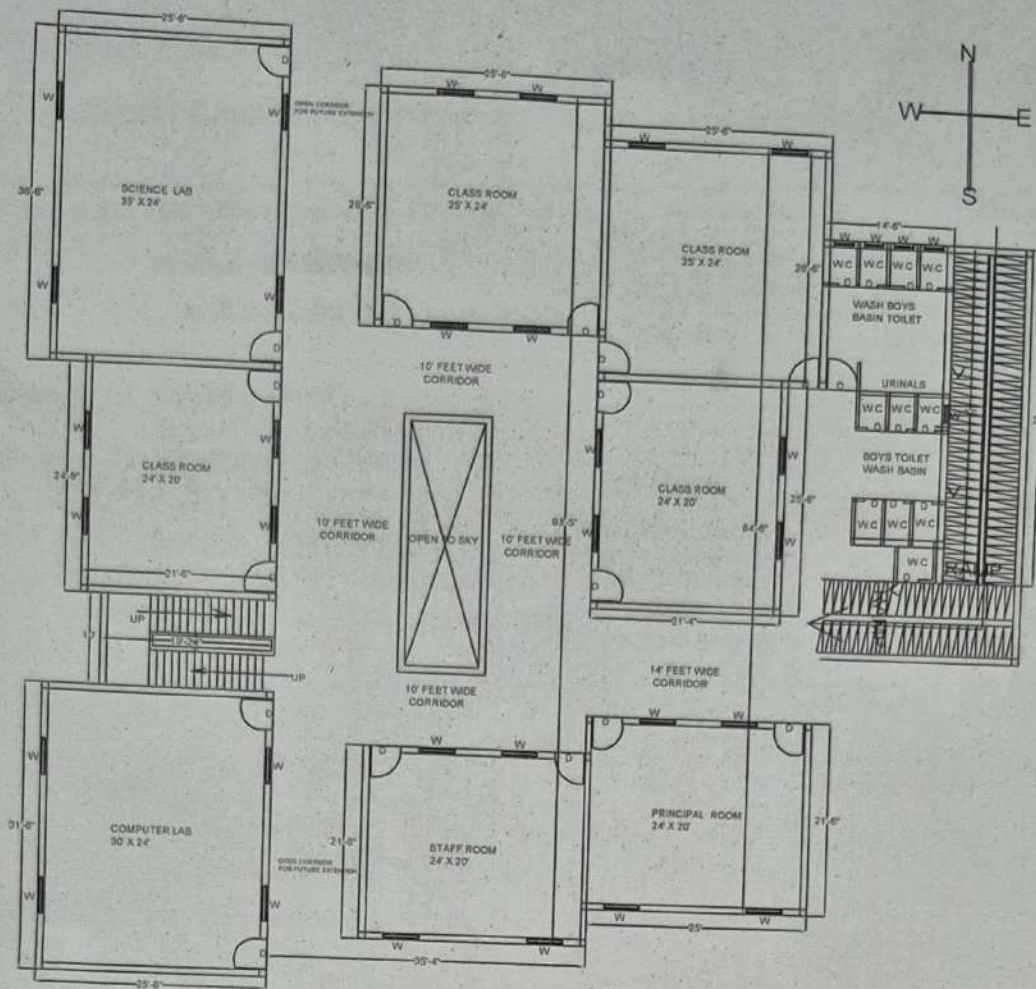


SCHOOL BUILDING AT NUH FOR ALIF INTERNATIONAL SCHOOL



GROUND FLOOR PLAN

DETAILS OF AREA

TOTAL PLOT AREA

1X 165'X 159'-6" = 26317.50 SQ.FT.

0.5 X 165 X 115'-6" = 9528.75 SQ.FT.

TOTAL = 35846.25 SQ.FT.

OR = 3982.91 SQ.YARDS

OR = 3330.11 SQ.MT.

COVERED AREA

GROUND FLOOR AREA

(1) X 36'-6" X 25'-6" = 930.75 SQ.FT.

(2) X 24'-9" X 21'-9" = 538.31 SQ.FT.

(3) X 10'-0" X 19'-2" = 191.60 SQ.FT.

(4) X 31'-6" X 25'-6" = 803.25 SQ.FT.

(5) X 93'-5" X 35'-4" = 3300.17 SQ.FT.

(6) X 84'-6" X 25'-6" = 2154.76 SQ.FT.

(7) X 37'-0" X 14'-6" = 536.5 SQ.FT.

TOTAL = 8229.58 SQ.FT.

OPEN AREA

35846.25 - 16265.16 = 19581.09 SQ.FT.

OR 2175.67 SQ. YARDS 1819.08 SQ.MT.

WIDTH=

RISER HEIGHT = 7"

TREAD WIDTH = 10"

RAMP 8' WIDTH

FEET 6' BOUNDARY WALL

SIGN. OF OWNER

M. Khadkhar

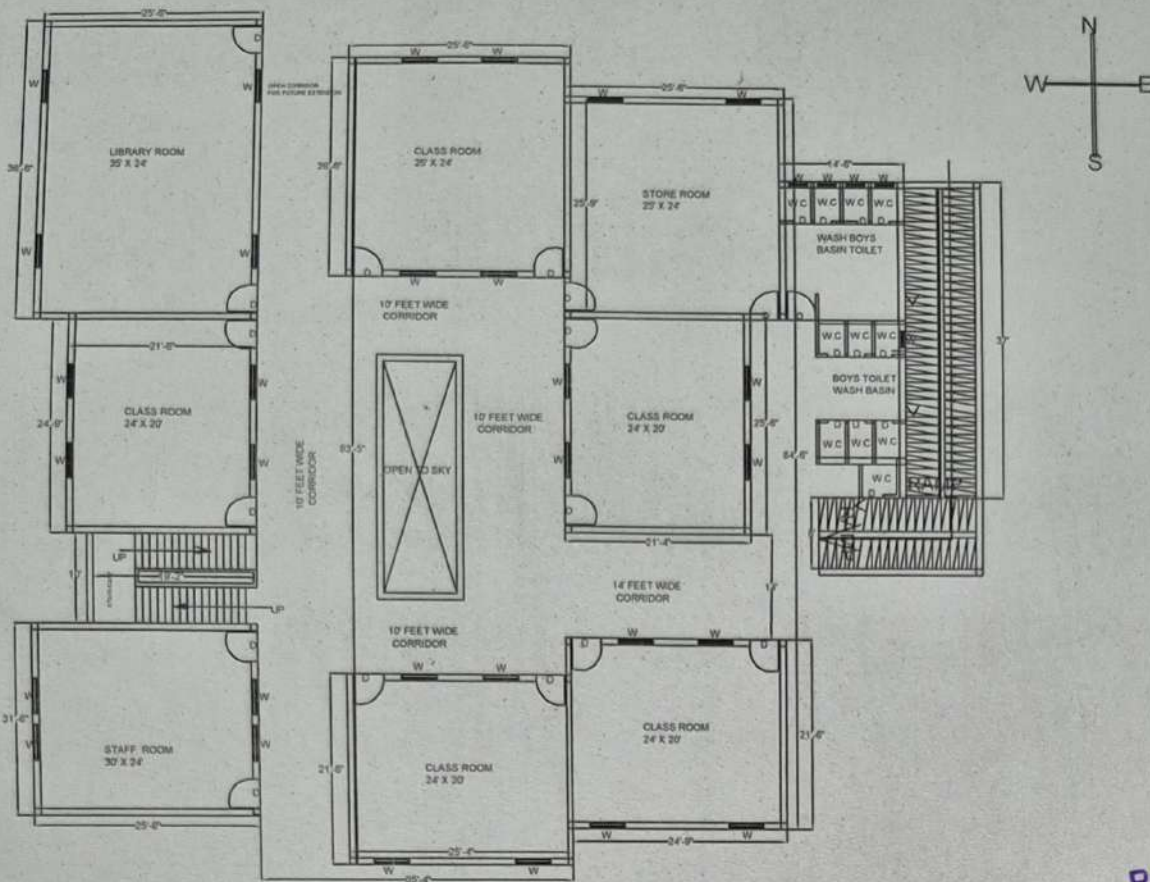
President
Mewat Educational Social
and Cultural Organizatio..

SIGN. OF ARCH

Rafeek

Rafeek Architects & Associates
Engineer, Near Old Tehsil Nuh
Regd. No. 14/30

SCHOOL BUILDING AT NUH FOR ALIF INTERNATIONAL SCHOOL



FIRST FLOOR PLAN

DETAILS OF AREA

- COVERED AREA = 7735.58 SQ.MT
 OR 8529.58 SQ YARDS OR 16265.16 SQ. YARDS
- (1) X 36'-6" X 25'-6" = 930.75 SQ.FT.
 - (2) X 24'-9" X 21'-9" = 538.31 SQ.FT.
 - (3) X 10'-0" X 19'-2" = 191.6 SQ.FT.
 - (4) X 31'-6" X 25'-6" = 803.25 SQ.FT.
 - (5) X 93'-5" X 35'-4" = 3303.35 SQ.FT.
 - (6) X 84'-6" X 25'-6" = 2154.78 SQ.FT.
 - (7) X 37'-0" X 14'-6" = 536.50 SQ.FT.
 - TOTAL = 7735.58 SQ.FT.

WIDTH=
 RISER HEIGHT =7"
 TREAD WIDTH =10"
 RAMP 8' WIDTH
 FEET 6' BOUNDARY WALL

President
 Mewat Educational Social
 and Cultural Organization

SIGN. OF OWNER
SIGN. OF ARCH

Rafeek Architects & Associates
 Engineer, Near Old Tehsil Nuh
 Regd. No. 14/30